

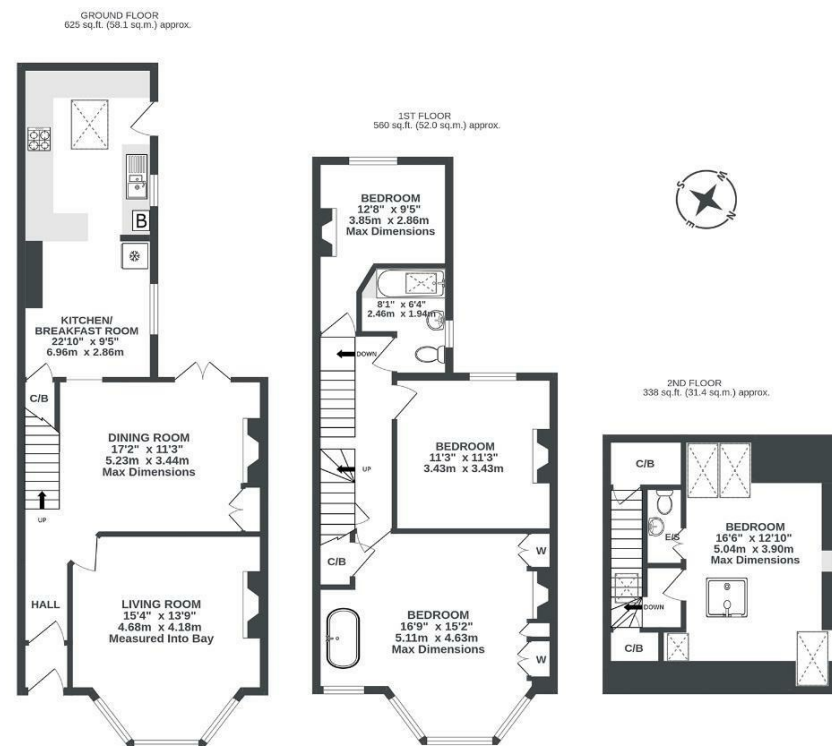
Boardwalk

Newbridge Road

ST ANNES, BRISTOL

Newbridge Road ST ANNE'S

APPROXIMATE FLOOR AREA
141.5 SQM / 1523 SQFT



Illustrations are for reference purposes only, measurements are approximate, not to scale.

Boardwalk

Newbridge Road

ST ANNES, BRISTOL



£535,000



4 Bedrooms



BS4 4DS



2 Bathrooms

“ We love the space! From waking up with coffee and view over the woods to sitting in the garden watching the birds play in the trees as the sun sets over the park. Its our own oasis from the busy city.”

